

# Lockin' Your Moment

2025 LocknLock  
Cookware

7



L



# Content

Our Story	4
What's New	6
LocknLock Cookware	8



<b>SPECIAL</b>	<b>10</b>
SUIT	12
DECORE	16
HARD & LIGHT PRO	22
SUIT STAINLESS	26
SUIT MELLOW	30
ROLLING POP	34
SUIT BRIC	38

<b>ESSENTIAL</b>	<b>42</b>
SOMA	44







# Our Story

We provide  
reassurance  
technology  
trusted for  
everyday life.

We are your companion, always close to your everyday life, bringing change to your world. The warm aroma from the kitchen,the excitement of starting something new,and every moment filled with laughter when family and friends gather –we are always there with you. Every product and service we offer is deeply connected to your daily life, enriching it in every way. We are always the most trustworthy choice for you. With unwavering quality and a warm heart, we will stay by your side for the long haul. Together, we will open the door to better days, every day, right by your side.

## Brand Core Value

LocknLock resolves customer distrust, discomfort, and anxiety with a warm and inclusive approach

## Confidence

Turning distrust into trust with absolute reliability

## Comfort

Providing comfort by resolving everyday inconveniences

## Constancy

Easing anxiety through lasting durability



# What's New?



**HARD & LIGHT Pro**  
LocknLock Fresh



**Suit BRIC**  
LocknLock To-Go



**Rolling Pop**  
LocknLock Fresh



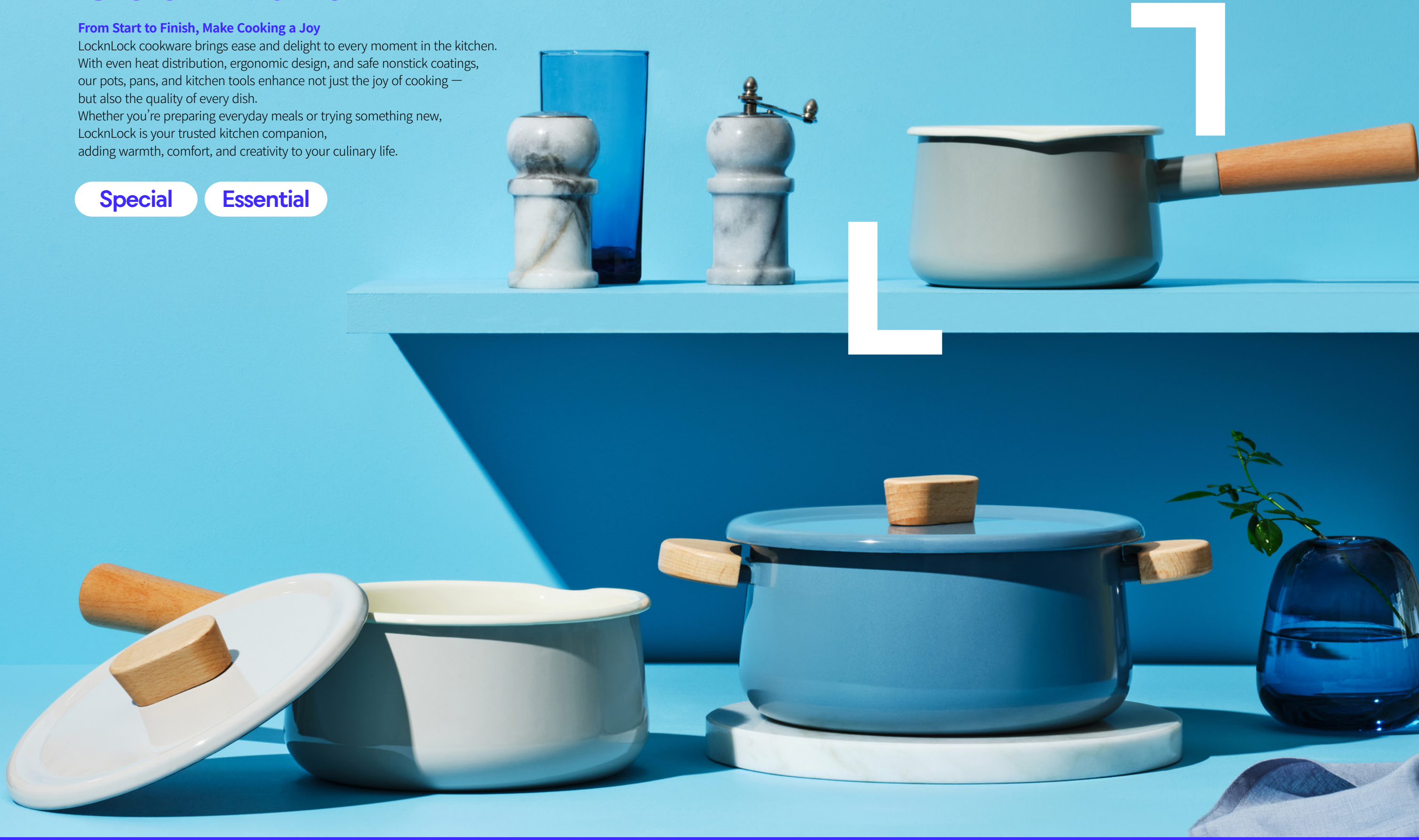


# Cookware

**From Start to Finish, Make Cooking a Joy**

LocknLock cookware brings ease and delight to every moment in the kitchen. With even heat distribution, ergonomic design, and safe nonstick coatings, our pots, pans, and kitchen tools enhance not just the joy of cooking — but also the quality of every dish. Whether you’re preparing everyday meals or trying something new, LocknLock is your trusted kitchen companion, adding warmth, comfort, and creativity to your culinary life.

- Special
- Essential







## Special

### The Specials — For a Kitchen with Personality

From Home Restaurant to Design and Master Series, our special lines combine aesthetic charm with performance. With every detail refined, they bring a sense of occasion to everyday moments, elevating your kitchen experience in both style and function.



# Suit



- Capacity** 18cm, 20cm, 22cm 24cm, 26cm
- Materials** Body - Aluminum, ceramic coating (pot), non-stick coating (frying pan)  
Handle - Heat-resistant glass, silicone  
Lid - Bakelite with rubber coating
- Functions** Induction Safe  
Electric Range Safe  
Gas Range Safe  
Highlight Safe



reddot winner 2022

1. Stylish cookware designed to sit perfectly on induction cooktops
2. Fast cooking in just about 2 minutes with True Wide Full Induction base technology
3. Optimal thickness ensures safe cooking with no base deformation or slipping
4. Sleek, soft-touch handle for extra comfort and convenience — no unnecessary length
5. Durable ceramic-coated pots that resist discoloration & non-stick coated pans that prevent food from sticking

## Full Induction Base for Faster, More Efficient Cooking.





22cm



**CSU1225**  
SIZE 360x227x74mm  
CTN 6 PCS / 0.022 CBM

18cm



**CSU1181**  
SIZE 320x188x121mm  
CTN 6 PCS / 0.049 CBM

20cm



**CSU1202**  
SIZE 297x208x127mm  
CTN 6 PCS / 0.05 CBM

22cm



**CSU1222**  
SIZE 317x228x132mm  
CTN 6 PCS / 0.06 CBM

24cm



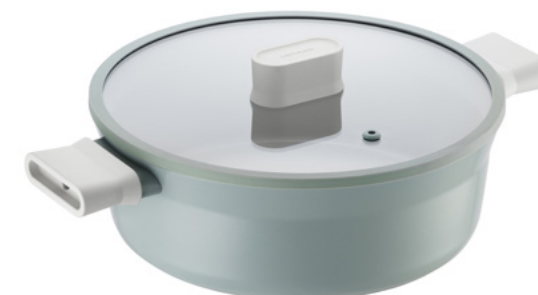
**CSU1243**  
SIZE 396x247x54mm  
CTN 6 PCS / 0.024 CBM

26cm



**CSU1263**  
SIZE 416x267x54mm  
CTN 6 PCS / 0.028 CBM

24cm



**CSU1242**  
SIZE 337x248x112mm  
CTN 4 PCS / 0.038CBM



Fast cooking in just about 2 minutes with  
True Wide Full Induction base technology





# Decore



- Capacity** 14cm, 18cm, 20cm, 22cm, 24cm, 26cm, 28cm
- Materials** Body, Lid - Pressed aluminum  
Handle, Knob - Bakelite
- Functions** Induction Safe  
Gas Range Safe  
Highlight Safe  
\*14cm Pan : No Induction



1. Personalized cookware with color options by item to match individual tastes
2. Retro-inspired, stylish cookware that elevates your tabletop presentation
3. Enhanced induction technology for improved heat efficiency and faster cooking
4. Purpose-specific coating applied for optimal performance in pots and pans
5. Comfortable handle designed with enhanced safety in mind

## Retro Charm, Modern Vibe — Brighten Up Your Kitchen in Style.





14cm



**LDE1142**  
SIZE 300x160x110mm  
CTN 6 PCS / 0.039 CBM

20cm



**LDE1204IH** SIZE 410x247x55mm  
CTN 4 PCS / 0.07 CBM

20cm



**LDE1207IH** SIZE 430x267x56mm  
CTN 6 PCS / 0.05 CBM

24cm



**LDE1244IH** SIZE 300x160x110mm  
CTN 6 PCS / 0.065 CBM

18cm



**LDE1181IH** SIZE 380x196x146mm  
CTN 6 PCS / 0.065 CBM

20cm



**LDE1202IH** SIZE 327x220x117mm  
CTN 4 PCS / 0.046 CBM



Comfortable handle designed with enhanced safety in mind

18cm



**LDE1186IH** SIZE 458x246x84mm  
CTN 12 PCS / 0.051 CBM





24cm



**LDE1243IH**

SIZE 307x195x164mm  
 CTN 8 PCS / 0.071 CBM



18cm



**LDE1182IH**

SIZE 458x246x85mm  
 CTN 6 PCS / 0.065 CBM


26cm



**LDE1263IH**

SIZE 450x286x86mm  
 CTN 8 PCS / 0.085 CBM

22cm



**LDE1225IH**

SIZE 300x160x110mm  
 CTN 8 PCS / 0.069 CBM



Purpose-specific coating applied for  
 optimal performance in pots and pans

28cm



**LDE1283IH**

SIZE 226x415x90mm  
 CTN 8 PCS / 0.094 CBM

22cm



**LDE1222IH**

SIZE 347x232x158mm  
 CTN 4 PCS / 0.051 CBM

24cm



**LDE1245IH**

SIZE 435x245x90mm  
 CTN 6 PCS / 0.068 CBM



# Hard & Light Pro

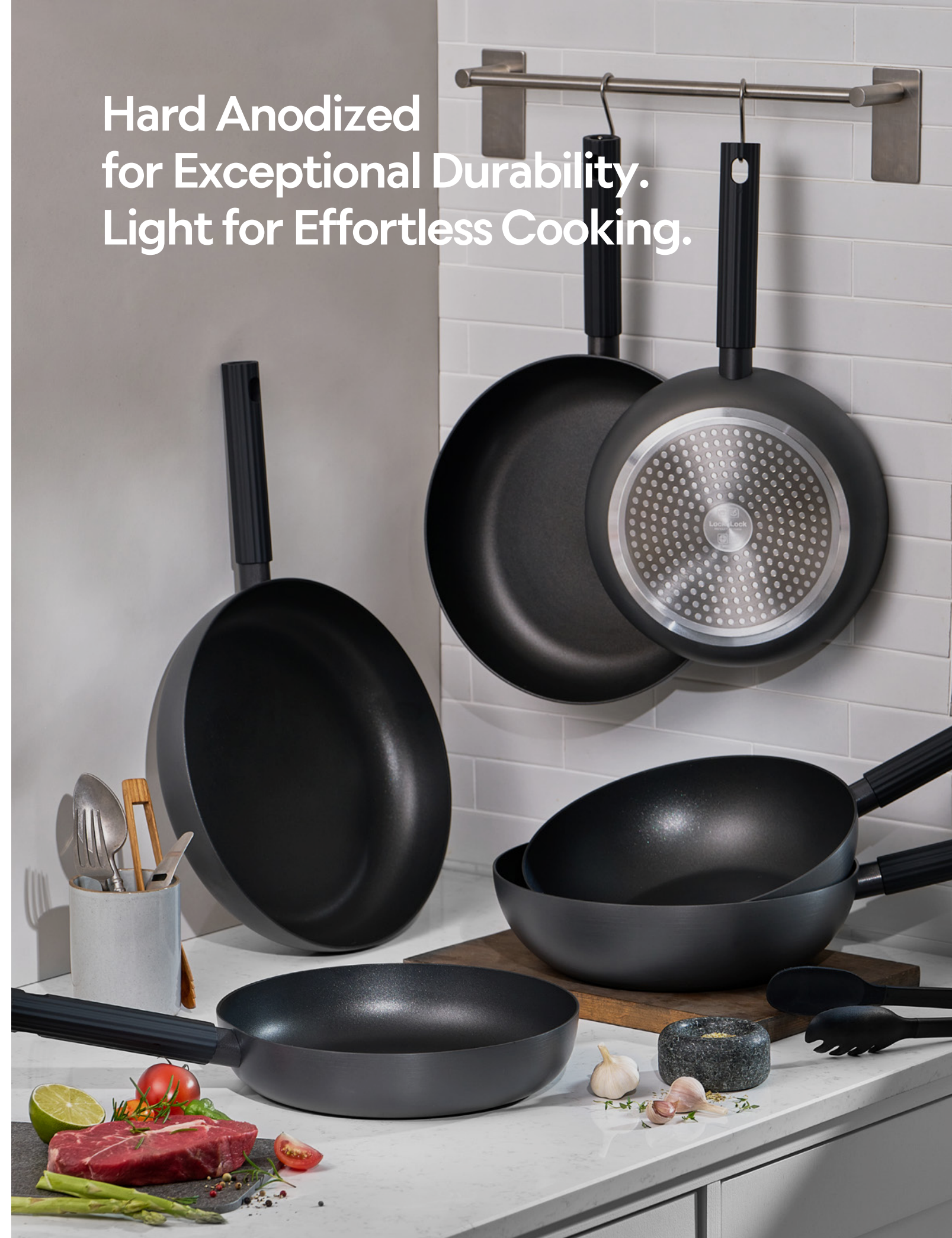


<b>Capacity</b>	24cm, 26cm, 28cm, 30cm
<b>Materials</b>	Body - Aluminum (Fluororesin coating)
<b>Functions</b>	Induction Safe Electric Range Safe Gas Range Safe Highlight Safe



1. Powerful coating performance returns with the upgraded F7
2. Exceptional durability with hard anodizing
3. Lighter weight and a wider cooking surface
4. Stylish and ergonomic handle that fits comfortably in one hand
5. Excellent heat conductivity and retention for faster cooking

Hard Anodized  
for Exceptional Durability.  
Light for Effortless Cooking.





24cm



**CAF2458IH**  
SIZE 275x455x285mm  
CTN 6 PCS / 0.036 CBM

30cm



**CAF3058IH** SIZE 335x490x300mm  
CTN 6 PCS / 0.049 CBM

26cm



**CAW2658IH** SIZE 295x455x325mm  
CTN 6 PCS / 0.044 CBM



Stylish and ergonomic handle  
that fits comfortably in one hand



Excellent heat conductivity  
and retention for faster cooking

26cm



**CAF2658IH** SIZE 295x495x295mm  
CTN 6 PCS / 0.04 CBM

28cm



**CAF2858IH** SIZE 215x470x300mm  
CTN 6 PCS / 0.044CBM

28cm



**CAW2858IH** SIZE 315x475x325mm  
CTN 6 PCS / 0.049 CBM



Winner of two major design awards —  
globally recognized style



# Suit Stainless



<b>Capacity</b>	20cm, 24cm, 28cm
<b>Materials</b>	Body - Stainless steel 304 (Fluororesin coating) Handle - Stainless steel 304 (Fluororesin coating)
<b>Functions</b>	Induction Safe Electric Range Safe Gas Range Safe Highlight Safe



reddot winner 2024

1. Safe and easy-to-use stainless steel 304 frying pan
2. Enjoy silky-smooth cooking with premium coating from Swiss ILAG
3. Stainless steel frying pan with Oil Balance System — the ultimate induction pan technology
4. Concave press and Oil Locking tech prevent oil from spreading and base from lifting
5. Triple-layered base enhances heat conductivity and retention

## Oil Balance System for Healthier, Tastier Cooking Every Time.





20cm



**CSF2020**  
SIZE 384x200x41mm  
CTN 4 PCS / 0.023 CBM

24cm



**CSW2420**  
SIZE 425x240x72mm  
CTN 4 PCS / 0.042 CBM

24cm



**CSF2420**  
SIZE 425x240x50mm  
CTN 4 PCS / 0.031 CBM

28cm



**CSF2820**  
SIZE 464x280x53mm  
CTN 4 PCS / 0.04 CBM

28cm



**CSW2820**  
SIZE 464x280x83mm  
CTN 4 PCS / 0.058 CBM



Triple-layered base enhances  
heat conductivity and retention



# Suit Mellow



**Capacity** 12cm, 14cm, 18cm, 20cm, 1.5L

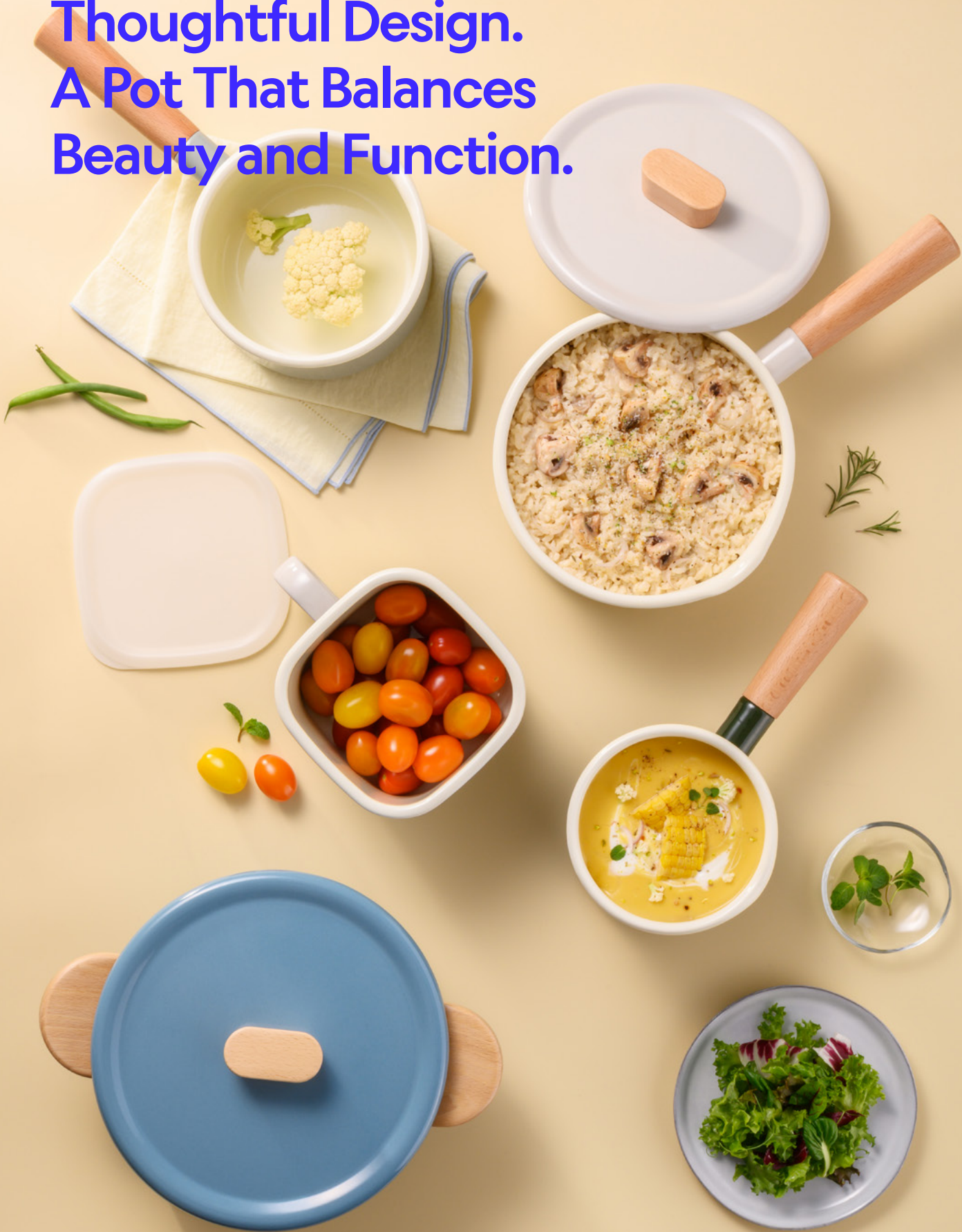
**Materials** Body - Enamel-coated steel plate  
Handle - Wood  
Lid - Square Canister Lid  
Polyethylene (PE)

**Functions** Induction Safe  
Gas Range Safe  
Highlight Safe  
No Microwave



- 1. Enamel pot series with a warm and emotional design
- 2. Hygienic and safe material with a glass-coated finish
- 3. Practical set for all generations and various cooking needs
- 4. oils quickly and feels light — the perfect everyday pot
- 5. Compatible with various heat sources

Timeless Enamel.  
Thoughtful Design.  
A Pot That Balances  
Beauty and Function.





12cm



**CSU2121**  
SIZE 268x142x90mm  
CTN 4 PCS / 0.023 CBM

20cm



**CSU2202**  
SIZE 307x219x130mm  
CTN 4 PCS / 0.042 CBM

14cm



**CSU2141**  
SIZE 307x163x95mm  
CTN 4 PCS / 0.031 CBM

18cm

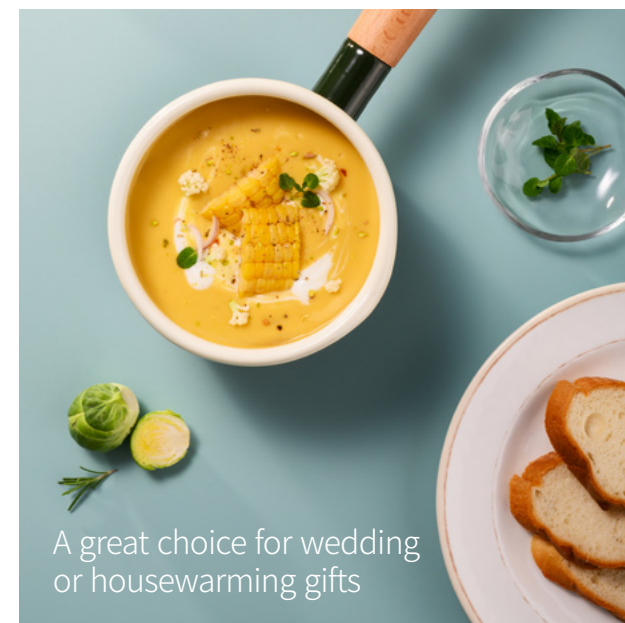


**CSU2181**  
SIZE 349x199x115mm  
CTN 4 PCS / 0.04 CBM

1.5L



**CSU2159**  
SIZE 190x147x117mm  
CTN 4 PCS / 0.058 CBM



A great choice for wedding  
or housewarming gifts



# Rolling Pop



- Capacity** 16cm, 18cm, 22cm
- Materials** Body - Aluminum  
(Ceramic / Ceramic coating)  
Knob, Handle - Bakelite  
Pan Body - Aluminum  
(Fluororesin / Ceramic coating)
- Functions** Induction Safe  
Electric Range Safe  
Gas Range Safe  
Highlight Safe



1. Rolling Pop makes even ordinary meals feel special and brings joy to your precious kitchen space
2. A unique design that brightens up your everyday routine , Charming and emotionally uplifting colors
3. Compact size perfect for 1-2 servings
4. Optimized coating for both pots and pans
5. Soft rubber-coated handle for a comfortable grip

Sized for One or Two.  
Styled for Small-Space Cooking.





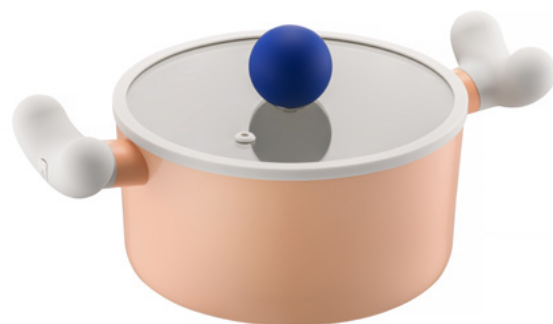
450ml



**CSU1225**

SIZE 360x227x74mm  
CTN 6 PCS / 0.022 CBM

750ml



**HFL102**

SIZE 143x96x93mm  
CTN 12 PCS / 0.017 CBM

1.05L



**HFL103**

SIZE 207x131x62mm  
CTN 12 PCS / 0.022 CBM



Charming and emotionally uplifting colors



# Suit BRIC



<b>Capacity</b>	18cm, 20cm, 22cm, 24cm, 26cm
<b>Materials</b>	Body - Aluminum (ILAC ceramic coating) Pan Body - Aluminum (ILAC premium non-stick coating)
<b>Functions</b>	Induction Safe Electric Range Safe Gas Range Safe Highlight Safe No Dishwasher



1. Suit Brick — interior cookware that fits perfectly on induction cooktops
2. Equipped with an Oil Locking System
3. Durable ceramic-coated pot that resists discoloration
4. Optimal thickness minimizes base deformation
5. Stackable design for efficient kitchen storage

Fast, Healthy Cooking  
with Minimal Oil.  
Smart Design That Sticks  
Perfectly to Induction.





18cm

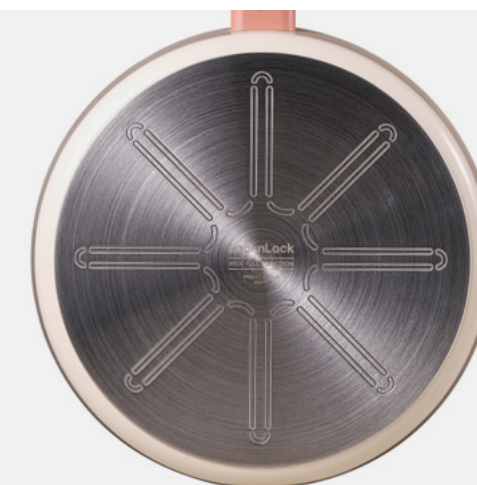


**CAS1855IH**  
SIZE 335x180x120mm  
CTN 6 PCS / 0.063 CBM

24cm



**CAL2455IH** SIZE 365x240x117mm  
CTN 4 PCS / 0.049 CBM



Free from 183 types  
of perfluorinated compounds (PFCs)

22cm



**CAW2255IH** SIZE 375x220x75mm  
CTN 8 PCS / 0.044 CBM

24cm



**CAF2455IH** SIZE 410x247x55mm  
CTN 8 PCS / 0.039 CBM

20cm



**CAC2055IH** SIZE 325x200x130mm  
CTN 6 PCS / 0.063 CBM

22cm



**CAC2255IH** SIZE 345x220x137mm  
CTN 4 PCS / 0.049 CBM



Knob structure allows  
the lid to stand upright

26cm



**CAF2655IH** SIZE 430x267x56mm  
CTN 8 PCS / 0.045 CBM





## Essential

### The Essentials, Perfected — For Everyday Cooking

Our basic lineup is optimized for daily use, with lightweight construction and well-balanced heat conduction that make cooking easy for anyone.



# Soma



- Capacity** 20cm, 24cm, 26cm, 28cm, 30cm
- Materials** Body - Pressed aluminum  
(Titanium coating [interior],  
Fluororesin coating [exterior])  
Handle - Aluminum (bracket),  
Bakelite
- Functions** Induction Safe  
Electric Range Safe  
Gas Range Safe  
Highlight Safe



1. Cook cleanly without spills thanks to the deep and wide body design
2. Durable coating resists peeling and prevents sticking over time
3. Upgraded non-stick exterior makes cleanup easier than ever
4. Lightweight design and comfortable handle reduce strain on your wrist
5. High heat efficiency on induction cooktops allows faster cooking

Wide, Deep, Wonderfully Easy -  
Designed for Beginners,  
Loved by All.





20cm



**LMH2203IH**  
SIZE 315x420x195mm  
CTN 8 PCS / 0.026 CBM

24cm



**LMH2243IH** SIZE 320x520x206mm  
CTN 8 PCS / 0.034 CBM

26cm



**LMH2263IH** SIZE 360x541x210mm  
CTN 8 PCS / 0.041 CBM

28cm



**LMH2283IH** SIZE 369x586x183mm  
CTN 6 PCS / 0.04 CBM

26cm



**LMH2265IH** SIZE 360x541x196mm  
CTN 6 PCS / 0.038 CBM

30cm



**LMH2303IH** SIZE 406x630x187mm  
CTN 6 PCS / 0.048 CBM

28cm



**LMH2285IH** SIZE 369x586x201mm  
CTN 6 PCS / 0.043 CBM

30cm



**LMH2305IH** SIZE 474x590x216mm  
CTN 6 PCS / 0.06 CBM



Lightweight design and comfortable  
handle reduce strain on your wrist





[www.LocknLock.com](http://www.LocknLock.com)